



Nutley

TOWNSHIP OF NUTLEY WATER AND SEWER UTILITY

ONE KENNEDY DRIVE
NUTLEY, NEW JERSEY 07110

Billing Inquiries: (973) 284-4962
Email: waterbilling@nutleynj.org
Website: www.nutleynj.org

How to Read Your Water & Sewer Bill

Your water and sewer bill is designed to give you more information and can be one of your best water conservation tools. Knowing how to read it can help you understand your consumption, detect possible leaks, and save you money!

For more information please visit www.nutleynj.org/watersewer



Nutley

TOWNSHIP OF NUTLEY WATER AND SEWER UTILITY

ONE KENNEDY DRIVE
NUTLEY, NEW JERSEY 07110

Billing Inquiries: (973) 284-4962
Email: waterbilling@nutleynj.org
Website: www.nutleynj.org/watersewer

WATER & SEWER BILL

ACCOUNT INFORMATION

ACCOUNT NO: 9999-0 PIN: 1234
LOCATION: 123 MAIN STREET
BILLING DATE: 10/27/24
DUE DATE: 11/27/24

ACCOUNT SUMMARY

LAST PAYMENT: DATE: 11/08/24 AMOUNT: 134.99
WATER PREVIOUS BALANCE: 0.00
SEWER PREVIOUS BALANCE: 0.00
CURRENT CHARGES: 134.99
INTEREST: 0.00
TOTAL DUE: 134.99

CURRENT METER ACTIVITY

	PREVIOUS READING	CURRENT READING	USAGE	DAYS
WATER	07/24/24 1682	10/17/24 1694	12	83

SPECIAL MESSAGE

SWITCH TO AUTO PAY AND NEVER MISS A PAYMENT
We are pleased to offer customers the ability to pay their water and sewer utility bill automatically. Visit www.nutleynj.org/onlinepayments for information and how to create an online account.

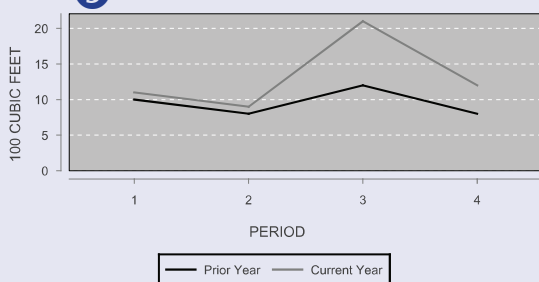
WATER AND SEWER UTILITY QUESTIONS
For more information, including ordinances, rates and fees visit www.nutleynj.org/watersewer or contact the Nutley Water and Sewer Department at 973-284-4958 or WaterSewer@nutleynj.org.

CURRENT CHARGES DETAIL

DESCRIPTION	UNITS	TOTAL
5/8" MTR MAINT FEE Q	1.00	10.50
WATER	1.00	55.13
SEWER-RESIDENTIAL	1.00	63.60
RES SWR IMPRV FEE	1.00	5.76

CONSUMPTION HISTORY

Water Usage History



MANAGE YOUR ACCOUNT AND WAYS TO PAY



View your Account Information, Pay Your Bill or Sign Up for Auto Pay anytime at www.nutleynj.org/onlinepayments

Payments may also be made by Mail, In-Person or the Drop Box at Town Hall



Sign Up for Paperless Billing at www.nutleynj.org/ebill

ACCOUNT INFORMATION

ACCOUNT NO: 9999-0 PIN: 1234
LOCATION: 123 MAIN STREET
BILLING DATE: 10/26/24 YEAR: 2024 PERIOD: 4

NAME: DOE, JOHN & JANE



AMOUNT DUE

DUE DATE: 11/27/24
CURRENT DUE: 134.99
INTEREST: 0.00
TOTAL DUE: 134.99

AMOUNT ENCLOSED \$

MAKE CHECKS PAYABLE TO:

NUTLEY WATER AND SEWER DEPT.
1 KENNEDY DRIVE
NUTLEY, NJ 07110

- Account Information**
This section contains your account number, service location, billing date & due date.
- Account Summary**
This area contains your utility account summary including the amount and date of your last payment, current balances, a breakdown of charges & credits, and total due.
- Current Meter Activity**
This section contains the reading period, prior and current reads, and usage in Hundred Cubic Feet (HCF).

(Hundred Cubic Feet: One HCF = 748 gallons of water)
- Current Charges Detail**
This area shows a detailed calculation of current charges.
- Consumption History**
This graph shows how your current usage compares to the prior year's usage
- Special Message**
Look here for messages from the township or other important information about your bill.
- Manage Your Account and Ways to Pay**
Information on how to manage your account online, payment options including Auto Pay & how to sign up for paperless billing are listed here.
- Payment Coupon**
The bottom portion of your bill must be remitted if you pay by mail or in-person.